

Part # FTS 2501  
87-95 Jeep Wrangler  
Shackle Reverse Kit



---

INSTALLATION INSTRUCTIONS

PLEASE READ ENTIRE INSTRUCTIONS BEFORE INSTALLATION OF COMPONENTS

THIS KIT PROVIDES 2.0" OF LIFT  
FRONT END COMPONENT INSTALLATION PROCEDURE

1. Remove Front Bumper From Vehicle.
2. Raise front of vehicle so that wheels are approximately 2" off ground and support frame rails with jack stands or blocks.
3. Remove front spring shackles and let wheels set on ground.
4. Remove rear bolts from front springs at frame mounts. Front axle should now be setting on ground with front shocks still connected.
5. The Full-Traction Spring Tower will be installed with hardware as assembled. Remove hardware from Towers and note where it was located. Remove old bushings from frame eyelet. Install new steel bushings in place of old bushings in frame eyelet. Install the new Full Traction spring tower over ends of frame horns. Install supplied bolts into holes at end of frame horns. Install front spring into new spring tower using supplied hardware. Tighten hardware hand tight.

**Front Spring/Rear mounting point.**

6. Install the new Full Traction front spring rear flared shackle into old frame mount using bushings and hardware as assembled. Install the 1/2" supplied bolts into the frame in place of the stock bolts. Torque bolts. Do Not Overtorque 1/2" nuts otherwise binding of the flared shackle will occur.
7. Install front cross brace between spring towers and torque all hardware at this time.
8. Install front bumper.

REAR END COMPONENT INSTALLATION PROCEDURE

1. Raise rear of vehicle approximately 2" off ground and support frame rails with jack stands or blocks.
2. Remove rear spring shackles.
3. Install Full Traction Boomerang Shackles with the 1" x 3" plated spacer in the middle hole.. Install the long end in the downward position and with the center point (arch forward) facing toward the axle. Use 1/2" x 4.5" bolts, nuts, and washers. Torque hardware.
4. Set vehicle on ground and check ride height. Double check all mounting hardware. Test drive vehicle. Recheck all mounting hardware after test drive and again after 100 miles.

PARTS LIST: Box 1

Description

Shackle Tower Universal left or right	2
Bell Shackle Universal	2
Cross brace	1
Shackle plates	4
Steel shackle spacer	2
Steel bushing	4
Bushing M02717 to bell shackle	4
1/2" x 13 x 4-1/2" bolt	14
7/16" flat washer	30
1/2" metalock nut	16
1/2" x 1-1/4" bolt	2
Sleeve to bell shackle	2



FTS2501 2" Lift Shackle Reverse Kit



Rear Shackles Shown Assembled

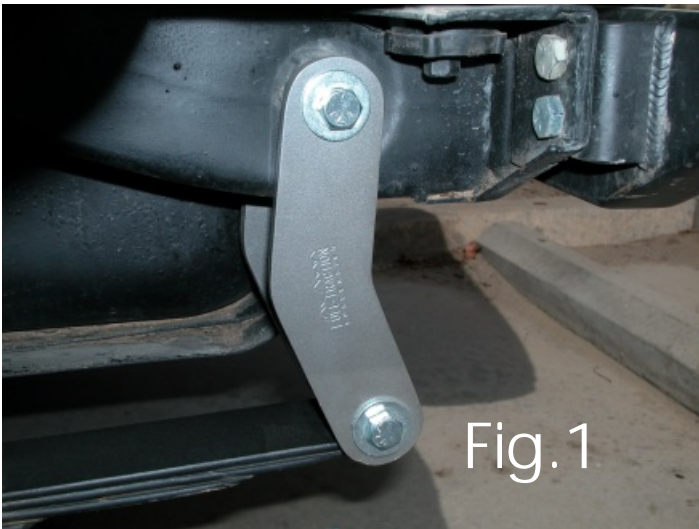


Fig. 1



Fig. 2

Rear spring shackles Installed. **Fig.1**

Front Shackle Tower and Cross Brace Installed. **Fig.2**

Front Bell Shackle Installed on the Front Spring Rear Eyelet. **Fig.3**



6951 McDivitt Dr. Bakersfield Ca 93313 USA  
Tech Ph: 661\398-9585  
e-mail: sales@full-traction.com  
www.full-traction.com



Fig. 3

Place Warranty Sticker Here

# WARRANTY

## Full Traction Limited Warranty

### About our warranty

Full Traction components may have minor finish damage to powder coated or plated surfaces which may occur during shipping and is not covered under warranty. Full Traction Suspension warrants each new Full Traction Component against factory defects in material and workmanship for 1 year after date of purchase. Full Traction Suspension systems are sold as complete systems and must be installed as such per Full-Traction installation instructions. Any substitutions of other manufacturers components or exemptions of required components will immediately void the warranty. Full-Traction suspension guarantees that all of its products are of the finest quality and free from manufacturing defects. Any product that has been manufactured incorrectly or is of a defective nature will be repaired or replaced at the discretion of Full-Traction Suspension. Returns: Only after written or verbal approval, send such part(s) and proof of purchase, via prepaid freight with an RGA (Return Goods Authorization) number to: Full-Traction Suspension 6951 McDivitt Dr. Bakersfield Ca 93313 USA. Shipments without an RGA number clearly designated on the outside of all containers or collect shipments will be refused. To obtain RGA(s) call 661/398-9585

### What is not covered

Suspension and steel fabricated components: Limited (12) month warranty excluding the following items: Tie rod ends, bushings, hardware, brake lines, heim joints. These parts are subject to wear and are not considered defective when worn. They are warranted for 90 days from the date of purchase for defects in workmanship. Shock absorbers are covered under our limited warranty. Products or components installed on vehicles other than those specifically indicated in the Full-Traction Suspension catalog or website. Products or components which have been subjected to abuse, accident, alteration, modification, improper installation, tampering, negligence, misuse, or products installed on a vehicle used in sanctioned racing events. A race is defined as any contest between two or more vehicles, or any contest of one or more vehicles against the clock, whether or not such contest is for a prize. This warranty does not include vehicles used for government or commercial purposes. Full Traction does not warrant any product not manufactured by Full Traction Suspension. Full Traction Suspension products are not covered under warranty outside the United States of America. Full Traction Suspension shall not be liable for any loss, damage, or injury, whether ordinary, direct, special, incidental or consequential damages, arising from the manufacture, sale, installation, re-sale, delivery, possession, handling or use of its products. Full Traction Suspension is not responsible for typographical errors either in pricing or in content. Warranties, policies, and prices subject to change without notice.

### Installer's Safety Warning

Full-Traction Suspension recommends our products to be installed by certified technicians only. These recommendations pertain only to Full-Traction Manufactured Products. Efforts to install our system without experience and knowledge may jeopardize the operating safety of the vehicle.

Detach and mail or fax to the address below

-----

Name \_\_\_\_\_ Phone Number (     ) \_\_\_\_\_

Address \_\_\_\_\_ City \_\_\_\_\_ State \_\_\_\_\_ Zip \_\_\_\_\_

Products Purchased from: \_\_\_\_\_ Date Purchased \_\_\_\_\_

Installed By \_\_\_\_\_ Date Installed \_\_\_\_\_

Vehicle make \_\_\_\_\_ Model \_\_\_\_\_ Year \_\_\_\_\_

Installation Comments \_\_\_\_\_

Product Part Number FTS2501 Description: JEEP YJ 2" SHACKLE REVERSE KIT

Warranty Registration Number \_\_\_\_\_

WARRANTY FORM

WARRANTY FORM

<p>Mail or Fax To:  Full Traction Suspension  6951 McDivitt Dr  Bakersfield Ca 93313</p> <p>Fax: 661-398-9555</p>
---

