



Maximum Suspension Performance...means - "Full-Traction"

PART # FTS7841 - FTS7841H - FTS7841M

6.0" Basic Lift System

2005 FORD SUPER DUTY 4wd

CARTON 1 (A)		
<u>Component List</u>		<u>Qty</u>
FTS786604	Radius Arm Drop Bracket	2
FTS786001	Track Bar Bracket	1
FTS786405	Brake Line Ext Bracket	2
FTSFD105	Pitman Arm	1
50-786012	Steering Stabilizer Bracket	1
81287	Steering Stabilizer Shock	1
786014	Steering Stabilizer Stud	1
70-7864 Hardware Kit		
B34x1.75	Long 3/4x1.75"l UNC Grade 8 Bolt	8
FW34	3/4 SAE Grade 8 Washer	16
N34MLNC	3/4 UNC Lock Nut Course	8
SLE104	Steering Stabilizer Sleeve	2
B516x0.75	5/16 x 3/4 UNC Gr8 Bolt	2
N516MLN	5/16 UNC Lock Nut	2
B38x5.5	3/8 x 5.5"l UNC Gr8 Bolt	2
FW38	3/8 SAE Gr8 Washer	4
N38MLN	3/8 UNC Lock Nut	2
B7916	X 3 9/16X3"l UNC Gr8 Bolt	2
Fw916	9/16 SAE Gr8 Washer	4
N916MLN	9/16 UNC Locknut	2
B716-14	x 5.0 UNC Gr8 Bolt	2
FW716	7/16 SAE Gr8 Washer	4
LW716	7/16 SAE Gr8 Split Lockwasher	2
B12-13	X 2.75 UNC GR 8 Bolt	1
1/2-13	UNC Lock Nut	2
1/2	GR 8 SAE Flat Washer	4
1/2-20	Unf Nut	2
1/2	gr 8 Aplit Lock Washer	2
1/2	USS Washer	1
1/2-13	x 1.25 Unc Gr 8 Bolt	1
Installation Instructions		1
FTS9990	Full-Traction Decal	1
FTS9991	Windshield Die Cut Decal	1

CARTON 2 (B)		
<u>Component List</u>		<u>Qty</u>
FTS786601	Coil Springs	2
SubAssembly Box		
FTS786404	Sway Bar Link Extension	2
50-786013	Center Carrier Support Spacer	1
FTS786406	Front Bump Stop Extension	2
15-R175	5/8" Round U-bolts/Rear	4
60-3011 U-Bolt Hardware Kit - (contains 1)		
NH58	5/8" High nut	8
FWT58	5/8" Flat Washer	8
SubAssembly Box		
FTS500FBK	Rear Lift Block, 5" Flat	2
CARTON 3 (C)		
<u>Shock Absorbers</u>		<u>Qty</u>
651896	Front Shock Absorber	2
658049	Rear Shock Absorber	2

Warranty Number and Information
is contained on the last page.
This information should be
kept with the vehicle as
a permanent record.



Maximum Suspension Performance...means - "Full-Traction"

INSTALLATION INSTRUCTIONS
FTS7841 BASIC SERIES SYSTEM
2005 4WD FORD SUPER DUTY F250/F350

Installation requires a professional mechanic.

Prior to installation, carefully inspect the vehicles steering and drive line systems, paying close attention to the tie rod ends, pitman and idler arms, ball joints and wheel bearing pre-load. Also check steering-to-frame and suspension-to-frame attaching points for stress cracks. The overall vehicle must be in excellent working condition. Repair or replace worn parts.

Please read entire instructions before attempting installation.

Check the parts and hardware against the parts list to ensure that your kit is complete. Separating parts according to the areas where they will be used and placing the hardware with the brackets before you begin will save installation time.

Secure and properly block vehicle prior to beginning installation.

Always wear safety glasses when using power tools.

BEFORE YOU BEGIN

1. Read the instructions and study the illustrations before attempting installation. Separating the parts according to the areas where they will be used and placing the hardware with the brackets before you begin will save installation time.
2. Check the parts and hardware against the parts list to assure that your kit is complete.
3. Always use jack stands when installing suspension components under the vehicle.

FRONT DISASSEMBLY AND ASSEMBLY PROCEDURES

1. Position vehicle on a smooth, flat, hard surface (ie. Concrete or asphalt).
2. Block rear tires and set the parking brake.
3. Raise vehicle and remove front wheels.
4. Remove front sway bar links from the axle Save the factory nut, bushings and washer to be re-used. (21mm socket)
5. On driver side, disconnect track bar from frame mount. (30mm socket)
6. Disconnect brake line from coil bucket and the axle. (10mm socket)
7. Disconnect lower shock absorber mount from axle.(18mm socket)
8. Remove coil spring. Remove steering stabilizer and bracket from frame.
9. Remove Track bar bracket from frame. (21mm & 18mm socket)
Remove pitman arm.
10. Remove bump stop from bellcup. Pull bump stop from cup by hand.
11. Remove bumpstop cup from frame. (10mm socket)
12. Drill bumpstop bell cup bolt hole to 3/8" **Fig.1**
13. Drill bumpstop hole in frame to 3/8" **Fig.2**
14. Install bump stop extension spacer and bell cup to frame using 3/8" x 5.5" bolt & nut. Install factory foam bump stop. **Fig 3 & Fig.4**



Fig 1.



Fig 2.



Fig 3.



Fig 4.

15. Install new pitman arm. Use red locktite on splines.

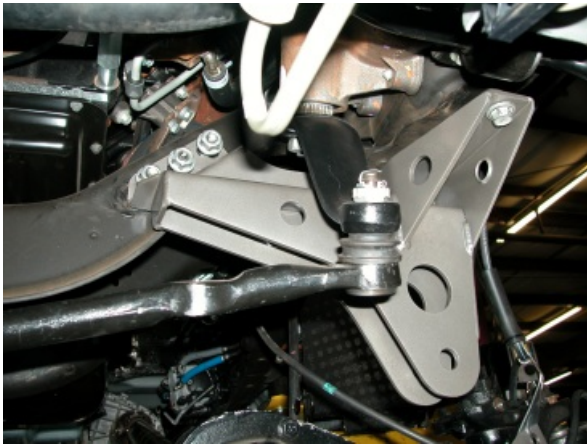


Fig 5.

16. Install new Full-Traction track bar bracket to frame using original hardware.



Fig 6.

Fig. 5&6

17. Install new steering stabilizer bracket to the backside of the crossmember. Use factory hardware plus supplied 1/2 x 1-1/4" bolt, washers and locknut.



Fig 7.

18. Install steering stabilizer using supplied 1/2 X 2.75 bolt, washers & locknuts to bracket and supplied tapered stud to drag link. Use 1/2-20 nuts and lockwashers and 1/2" flat washer against bushing for this.



Fig 8.

19. Disconnect factory ABS line clip from lower inner fender.

20. Disconnect factory radius arm from frame mount Fig.8 (24mm socket)



Fig 9.

21. Apply the factory rubber spacer to the top of the coil spring. Install new coil springs. **Fig.10**

22. Install new shock to axle housing using original bolts.

23. Attach shock at the top. Not shown.



Fig 10.

24. Attach track bar to track bar drop bracket with original hardware. Turn steering wheel to help align the track bar. **Fig.13**



Fig 13.

25. Install FTS sway bar extension links to the factory sway bar links and attach to axle using original bushings and nut. New Full-Traction links are threaded and simply screw onto the factory links. **Fig.14**



Fig 14.



Fig 16.



Fig 15.

26. Install new upper brake line extension bracket to frame with original bolts. Install the brake line to bracket with new 5/16 x 3/4" bolt & nut as shown in **Fig.15** Attach the lower factory brake line bracket to the original hole in the axle using the original factory bolt. **Fig.16**

27. Install drive shaft carrier bearing spacer with supplied 7/16 x 2-3/4" long bolt. **Refer to Fig 17** Install using shortest mounting configuration.



Fig 17.

REAR DISASSEMBLY AND ASSEMBLY PROCEDURES

1. Raise rear of vehicle with jack or hoist. Place jack stands under the frame on both sides of vehicle.
2. Remove rear u-bolts and rear shocks.
3. Install new Full-Traction Lift blocks under the factory block as shown in **Fig.18**
4. Install new u-bolts, washers and High nuts and torque to 110 lbs./Ft.



Fig 18.

5. Install new rear shocks.

Place Warranty Sticker Here

WARRANTY

Full Traction Limited Warranty

About our warranty

Full Traction components may have minor finish damage to powder coated or plated surfaces which may occur during shipping and is not covered under warranty. Full Traction Suspension warrants each new Full Traction Component against factory defects in material and workmanship for 1 year after date of purchase. Full Traction Suspension systems are sold as complete systems and must be installed as such per Full-Traction installation instructions. Any substitutions of other manufacturers components or exemptions of required components will immediately void the warranty. Full-Traction suspension guarantees that all of its products are of the finest quality and free from manufacturing defects. Any product that has been manufactured incorrectly or is of a defective nature will be repaired or replaced at the discretion of Full-Traction Suspension. Returns: Only after written or verbal approval, send such part(s) and proof of purchase, via prepaid freight with an RGA (Return Goods Authorization) number to: Full-Traction Suspension 6951 McDivitt Dr. Bakersfield Ca 93313 USA. Shipments without an RGA number clearly designated on the outside of all containers or collect shipments will be refused. To obtain RGA(s) call 661/398-9585

What is not covered

Suspension and steel fabricated components: Limited (12) month warranty excluding the following items: Tie rod ends, bushings, hardware, brake lines, heim joints. These parts are subject to wear and are not considered defective when worn. They are warranted for 90 days from the date of purchase for defects in workmanship. Shock absorbers are covered under our limited warranty. Products or components installed on vehicles other than those specifically indicated in the Full-Traction Suspension catalog or website. Products or components which have been subjected to abuse, accident, alteration, modification, improper installation, tampering, negligence, misuse, or products installed on a vehicle used in sanctioned racing events. A race is defined as any contest between two or more vehicles, or any contest of one or more vehicles against the clock, whether or not such contest is for a prize. This warranty does not include vehicles used for government or commercial purposes. Full Traction does not warrant any product not manufactured by Full Traction Suspension. Full Traction Suspension products are not covered under warranty outside the United States of America. Full Traction Suspension shall not be liable for any loss, damage, or injury, whether ordinary, direct, special, incidental or consequential damages, arising from the manufacture, sale, installation, re-sale, delivery, possession, handling or use of its products. Full Traction Suspension is not responsible for typographical errors either in pricing or in content. Warranties, policies, and prices subject to change without notice.

Installer's Safety Warning

Full-Traction Suspension recommends our products to be installed by certified technicians only. These recommendations pertain only to Full-Traction Manufactured Products. Efforts to install our system without experience and knowledge may jeopardize the operating safety of the vehicle.

Detach and mail or fax to the address below

Name _____ Phone Number () _____

Address _____ City _____ State _____ Zip _____

Products Purchased from: _____ Date Purchased _____

Installed By _____ Date Installed _____

Vehicle make _____ Model _____ Year _____

Installation Comments _____

Product Part Number FTS7841 Description: 2005-2006 Ford 4wd Super Duty F250/F350 6" Basic System

Warranty Registration Number _____

Mail or Fax To:
Full Traction Suspension
6951 McDivitt Dr
Bakersfield Ca 93313

Fax: 661-398-9555

WARRANTY FORM

WARRANTY FORM

